



19 Brickhouse Lane, Dore, Sheffield, S17 3DQ

Saxton Mee

19 Brickhouse Lane

Dore

Offers Around

£220,000

A fantastic position overlooking open fields to the front an extended two bedroom mid-terrace cottage in need of some updating but having the benefit of a good sized garden a short distance from the property.

Offered for sale with immediate vacant possession and no chain and ideally situated within a short walk of the excellent amenities of Dore Village and the beautiful open countryside of the Peak District.

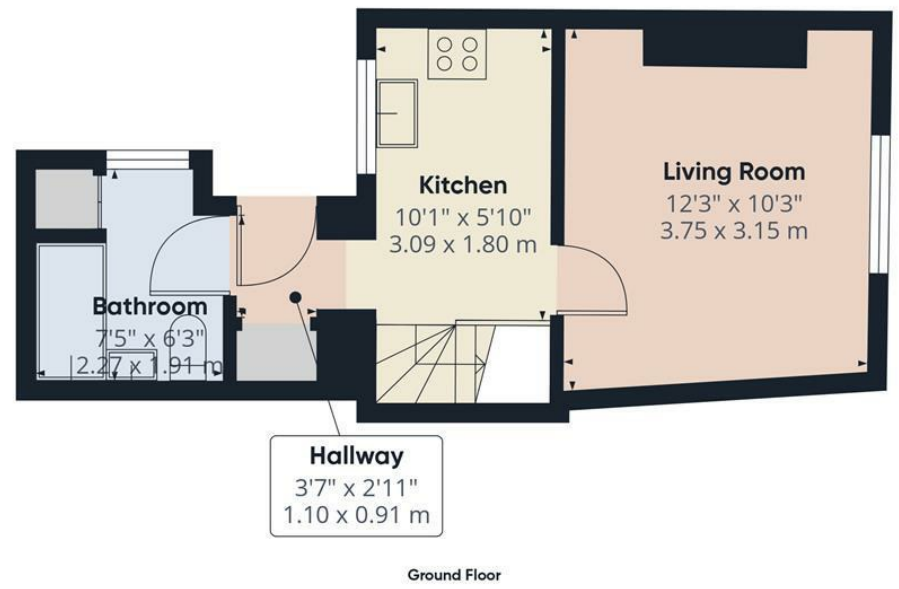
Rear entrance lobby, bathroom with full suite, fitted kitchen and lounge. On the first floor two bedrooms. Outside rear garden a short distance from the property and two external store places.

Convenient for the excellent amenities of Dore Village.

- Mid-terrace cottage
- Two bedrooms
- Immediate vacant possession and no chain
- Stunning views over open countryside
- In need of some updating
- Easy access and walk to Dore Village
- Ideal for the first time buyer
- On the edge of the beautiful open countryside of the Peak District
- EPC Rating: D
- Viewings Via Banner Cross







Approximate total area^m
437 ft²
40.7 m²



(1) Excluding balconies and terraces

Calculations reference the RICS IPMS 3C standard. Measurements are approximate and not to scale. This floor plan is intended for illustration only.
GIRAFFE360

While we endeavour to make our sales particulars fair, accurate and reliable, they are only a general guide to the property and, accordingly, if there is any point, which is of particular importance to you, please contact the relevant office. The Agents have not tested any apparatus, equipment, fittings or services and so cannot verify they are in working order. The buyer is advised to obtain verification. Please note all the measurement details are approximate and should not be relied upon as exact. All plans, floor plans and maps are for guidance purposes only and are not to scale. Under no circumstances should they be relied upon as exact or for use in planning carpets and other such fixtures, fittings or furnishings. YOUR HOME IS AT RISK IF YOU DO NOT KEEP UP REPAYMENTS ON A MORTGAGE OR OTHER LOAN SECURED ON IT. 'A Life Assurance policy may be requested.' 'Written Quotations of credit terms available on request.'

Banner Cross
T: 0114 268 3241
E: bannercross@saxtonmee.co.uk
www.saxtonmee.co.uk

Hathersage
T: 01433 650009
E: hathersage@saxtonmee.co.uk

Bakewell
T: 01629 815307
E: bakewell@saxtonmee.co.uk

Matlock
T: 01629 828250
E: matlock@saxtonmee.co.uk

